

## FTR 800 FREIGHTER

### Engine

Model	ISUZU 6HH1-S
Type	Naturally aspirated
No. of cylinders	6 in-line
Bore x stroke (mm)	115 x 132
Displacement (cm <sup>3</sup> )	8 226
Weight (kg)	525
Compression ratio (:1)	18.5
*Output (kW @ r/min)	147 @ 2,850
* Torque (N.m @ r/min)	500 @ 1,700
* ISO rating	

### Clutch

Make/Model	DAIKIN
Type	Single dry plate
Diameter (mm)	350
Operation	Hydraulic

### Transmission

Make/Model	ISUZU MLD6A
Ratios (:1)	
• 1st	8.761
• 2nd	5.543
• 3rd	3.569
• 4th	2.389
• 5th	1.533
• 6th	1.000

### Front Axle

Type	Reverse Elliot I-beam
------	-----------------------

### Rear Axle

Type	Single banjo, fully floating
Final drive ratio (:1)	5.125

### Performance

Maximum speed (km/h)	112.9
Gradeability (%)	31.9

### Suspension

Front	Semi-elliptical leaf springs
Rear	Semi-elliptical leaf springs

### Brakes

System	Air over hydraulic
Park brake	Air acting on rear wheels
Total friction area (cm <sup>2</sup> )	4,640

### Steering

Ratio (:1)	22.4
Operation	Power

### Cab

Control	Forward
Tilt	Yes

### Wheels

Type	Radial
Tyres:	
• Front	11R22.5-16PR
• Rear	11R22.5-16PR
Rims:	
• Front	8.25 X 22.5
• Rear	8.25 X 22.5

### Fuel tank

Capacity (litres)	200
-------------------	-----

### Electrical system

System voltage (V)	24
--------------------	----

**ISUZU**  
TRUCKS

**Disclaimer:** All specifications are subject to change without notice. While due caution has been exercised in the production of this document, Isuzu Truck South Africa does not accept liability whatsoever for any errors or omissions.

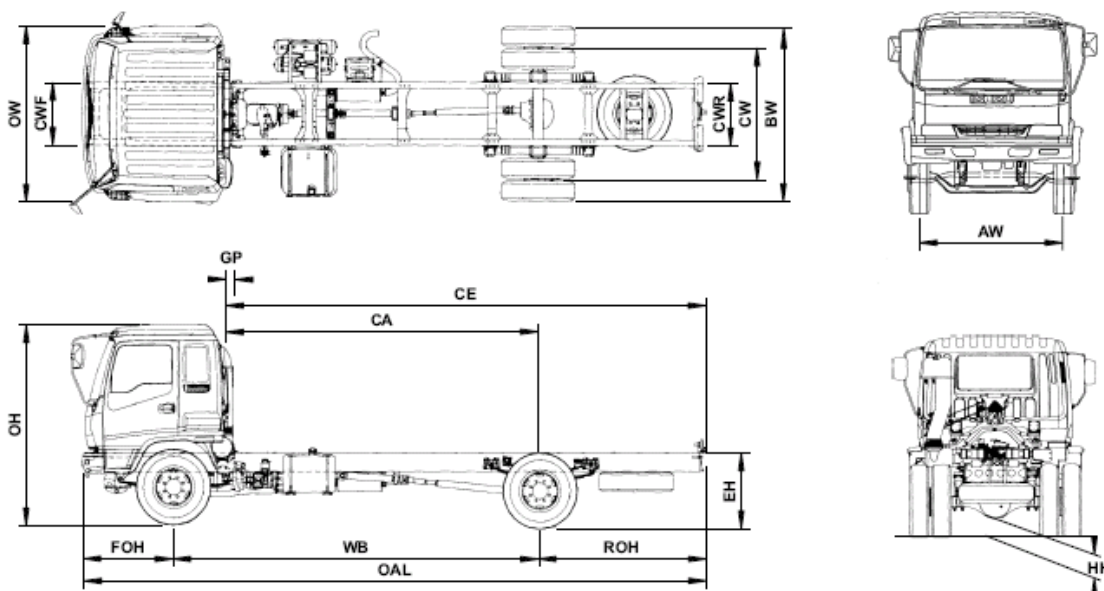
## FTR 800 FREIGHTER

### Vehicle Dimensions (mm)

AOL	Overall length	8,520
OW	Overall width	2,400
OH	Overall height	2,700
WB	Wheelbase	5,050
CE	Cab to chassis end	6,540
CA	Cab to rear axle	4,340
FOH	Front overhang	1,270
ROH	Rear overhang	2,200
GP	Body gap	140
BW	Rear axle width	2,355
AW	Front track	1,930
CW	Rear track	1,790
EH	Chassis rear end height	1,045
CWF	Front chassis width	850
CWR	Rear chassis width	850
HH	Rear ground clearance	250

### Vehicle Masses (kg)

Manufacturer's GVM	14,000
Permissible gross mass (V)	14,000
Manufacturer's GCM	22,500
Permissible combination mass (D/T)	22,500
Chassis cab weight	4,380
Unladen:	
• Front	2,600
• Rear	1,780
Body and payload	9,620
Gross axle mass load – front (GA <sup>1</sup> )	5,200
Gross axle mass load – rear (GA <sup>2</sup> )	9,200
Permissible axle load – front (A <sup>1</sup> )	5,200
Permissible axle load – rear (A <sup>2</sup> )	9,000
Tyre capacity – front	6,300
Tyre capacity – rear	11,200



**ISUZU**  
TRUCKS

**Disclaimer:** All specifications are subject to change without notice. While due caution has been exercised in the production of this document, Isuzu Truck South Africa does not accept liability whatsoever for any errors or omissions.